



# The plans

TENGRESHAM

WOOD STREET



# Ground

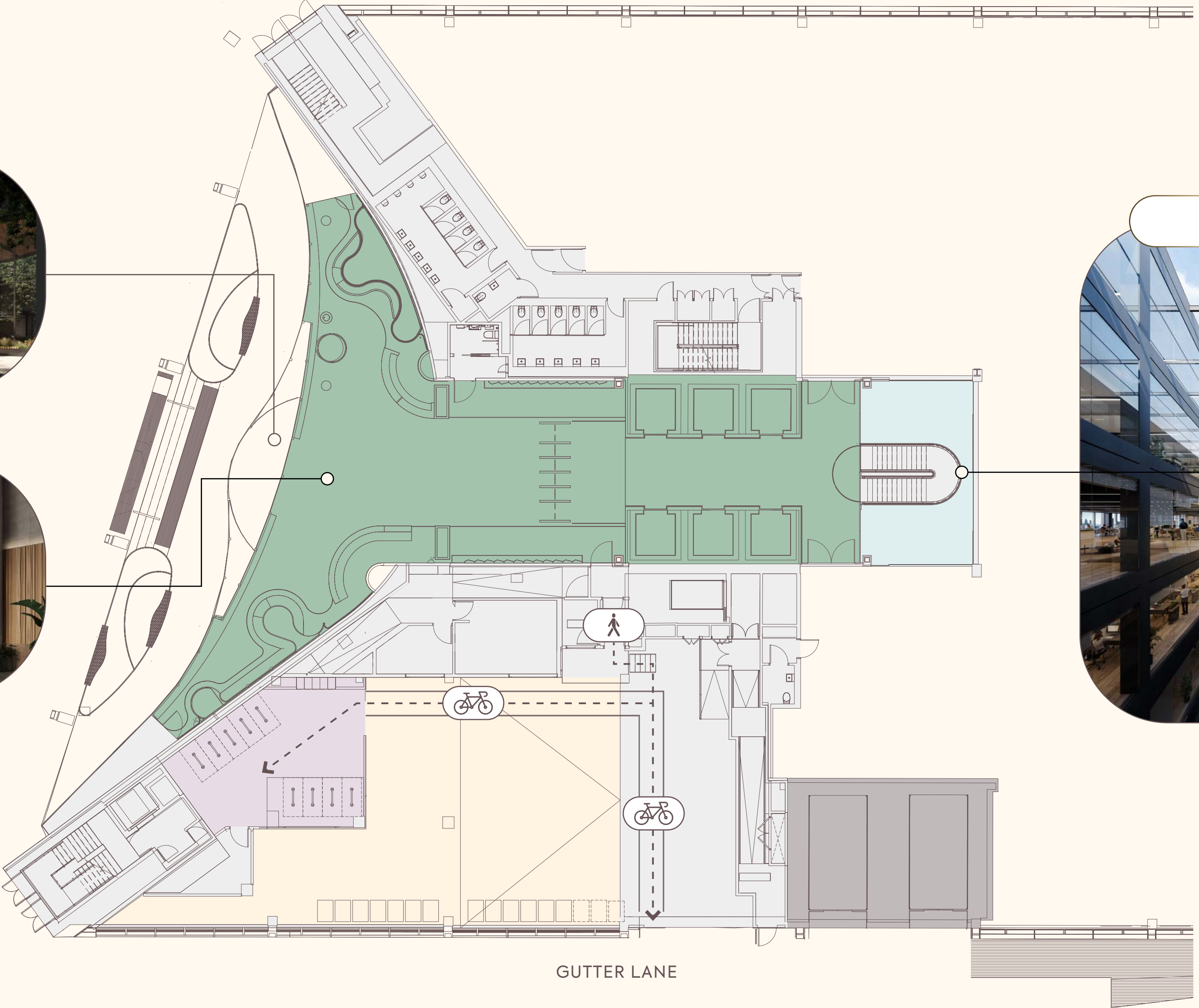
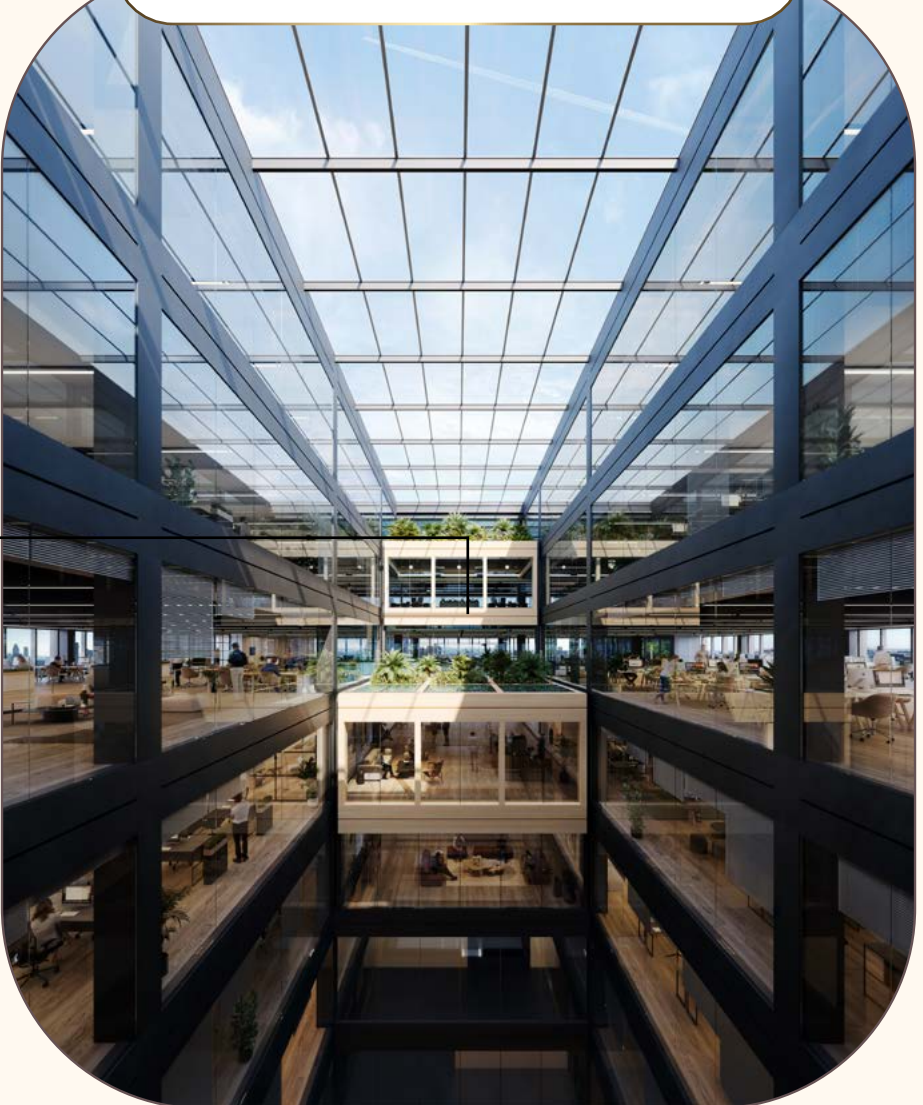
Impressive entrance



Refurbished lobby



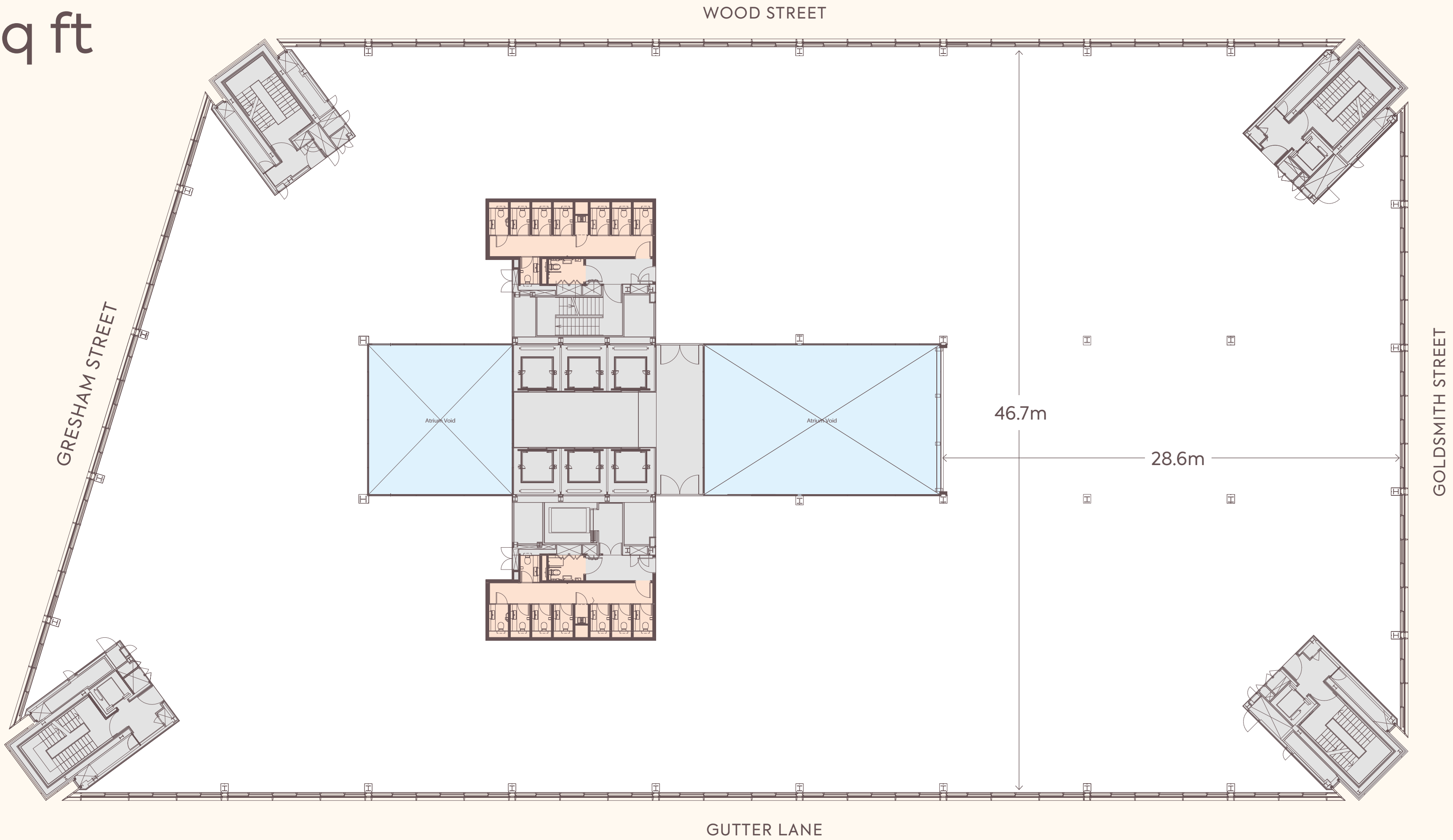
Light-filled atrium



- KEY
- Lobby
  - Loading bay
  - Bicycle storage
  - Car and bicycle lift
  - Core
  - Cycle flow

Floor plans not to scale. For identification purposes only.

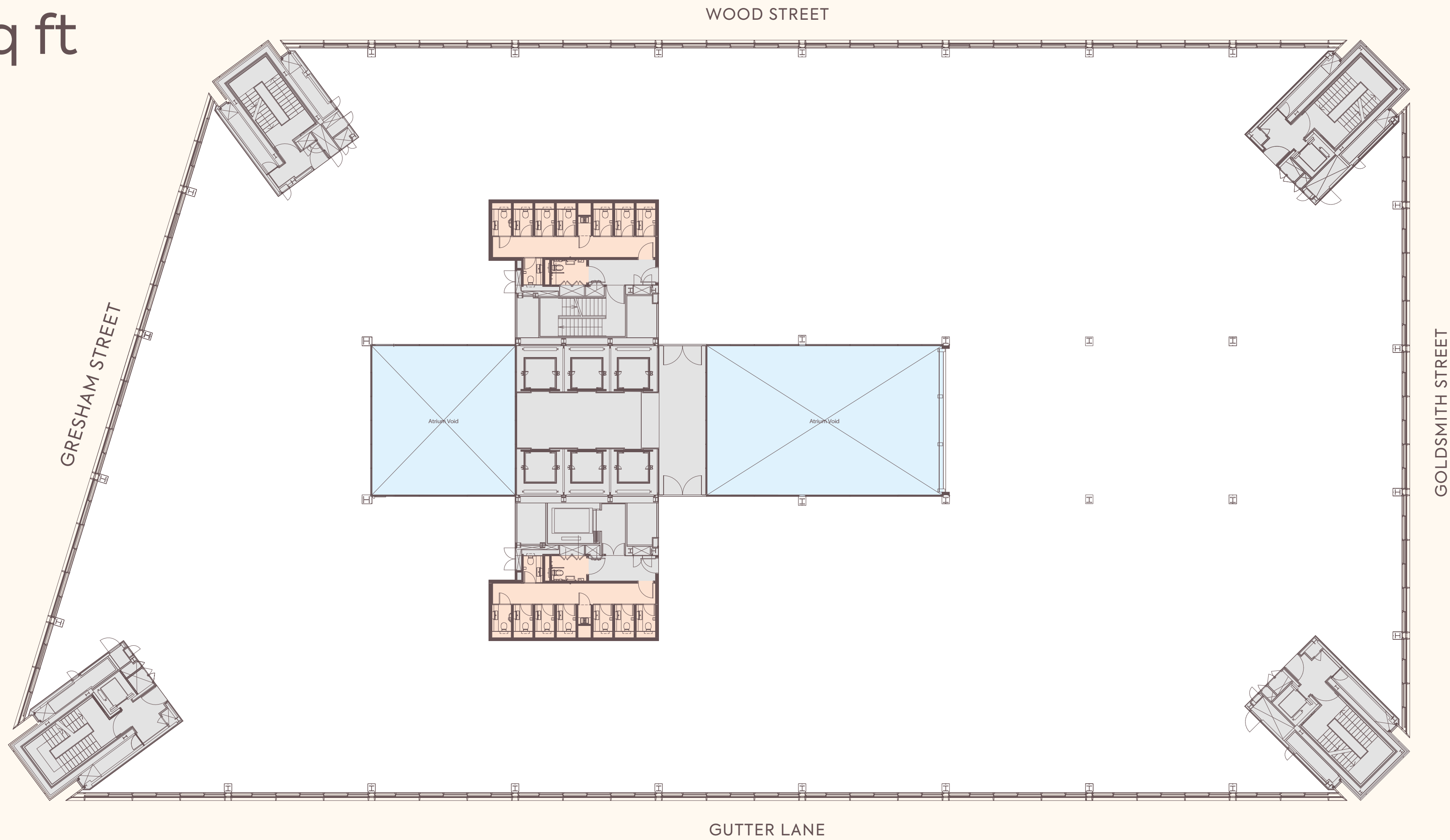
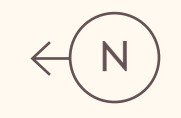
# Third: 32,403 sq ft



- KEY
- Office
  - Core
  - WCs

Floor plans not to scale. For identification purposes only.

# Fourth: 32,317 sq ft

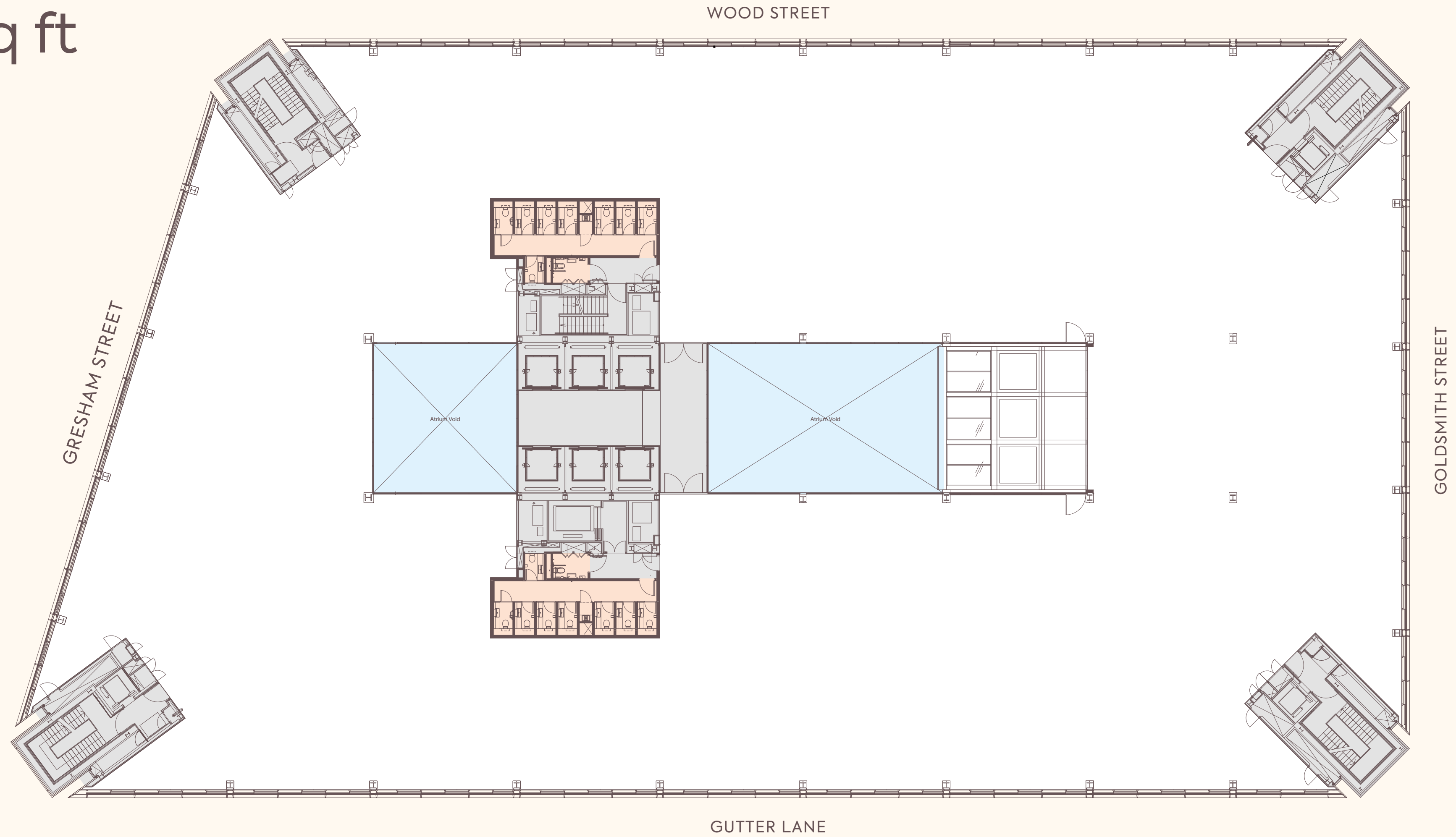
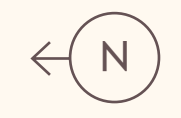


KEY

- Office
- Core
- WCs

Floor plans not to scale. For identification purposes only.

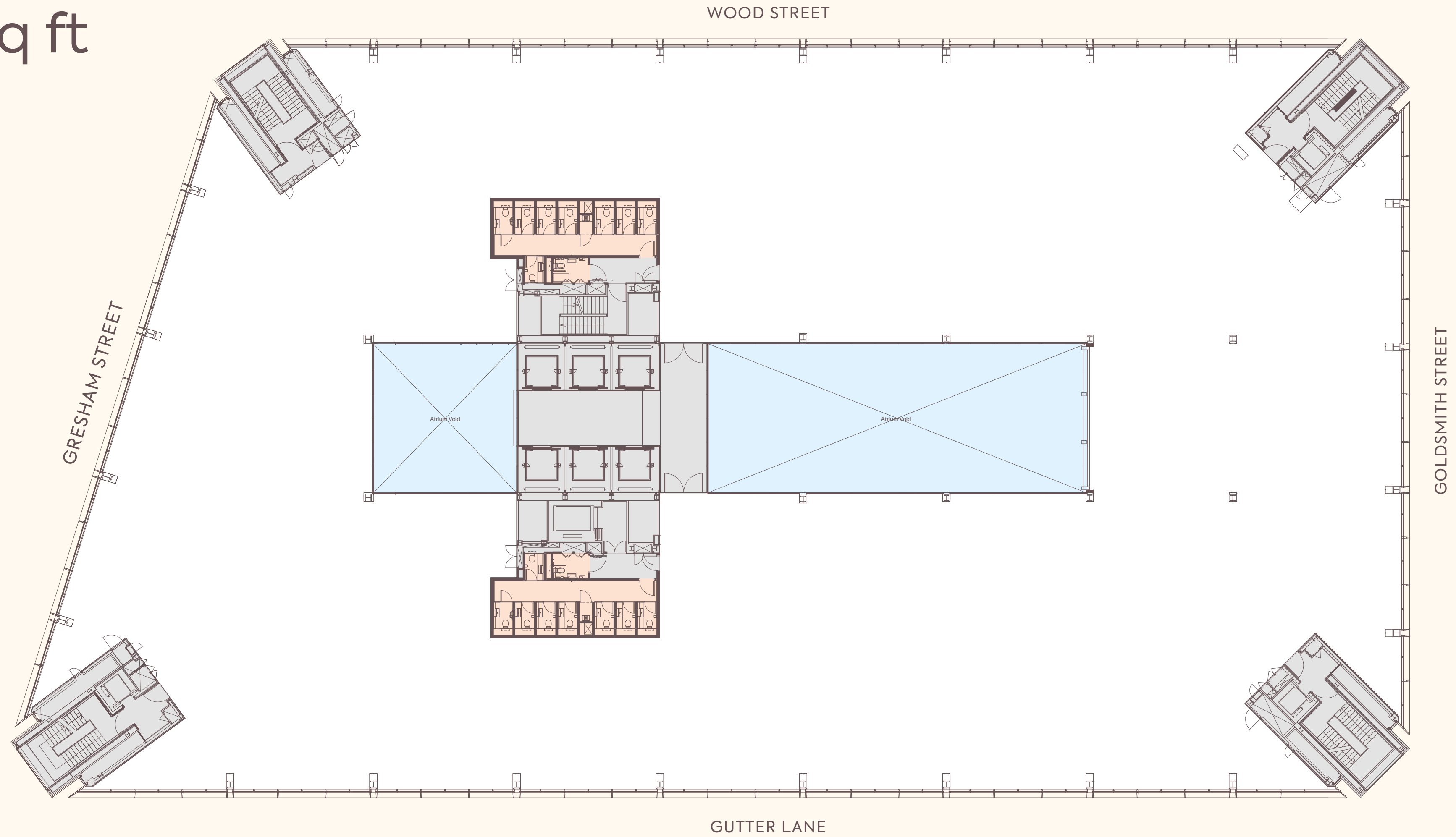
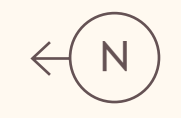
# Fifth: 31,477 sq ft



- KEY
- Office
  - Core
  - WCs

Floor plans not to scale. For identification purposes only.

# Sixth: 29,914 sq ft



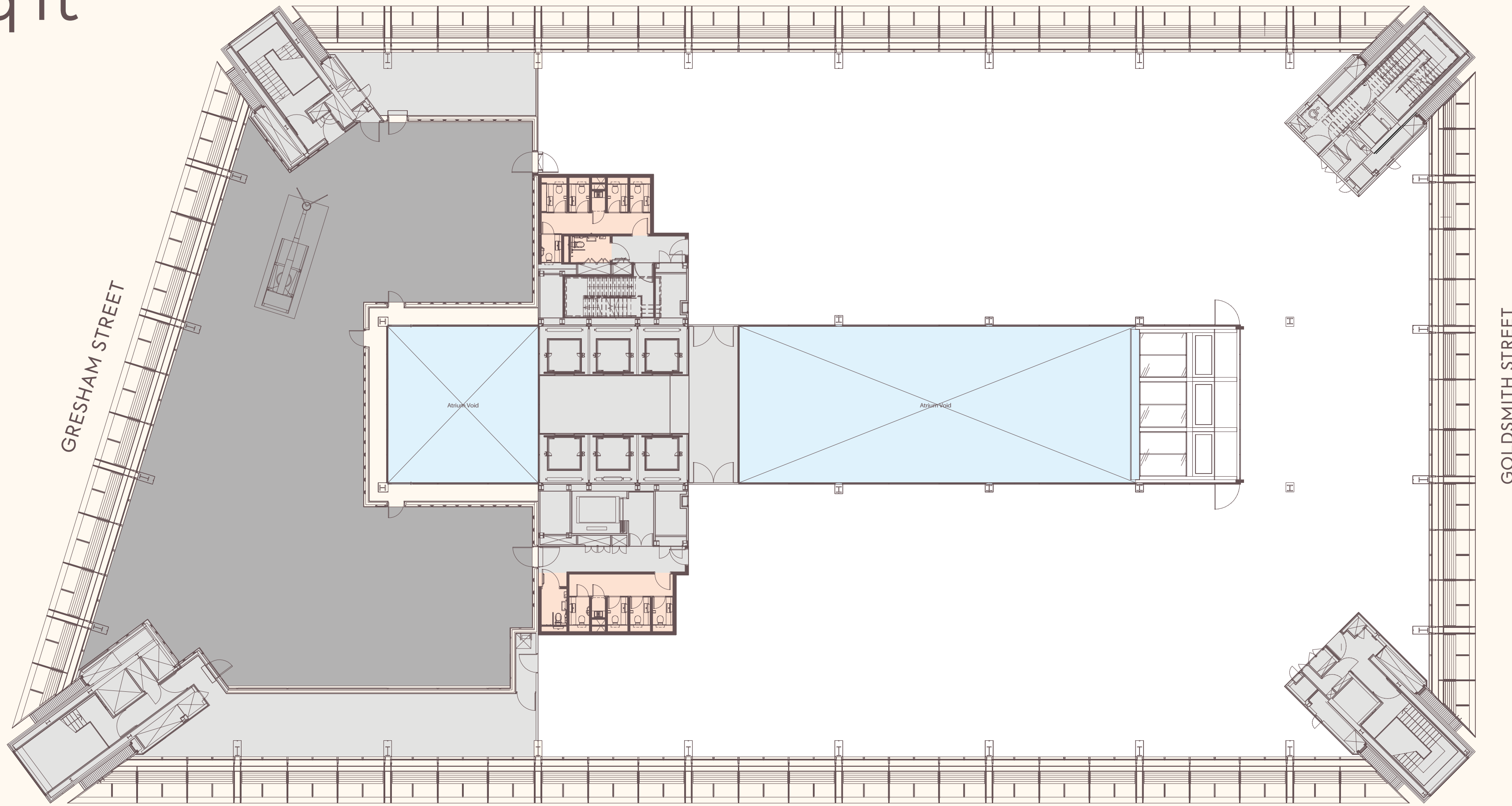
- KEY
- Office
  - Core
  - WCs

Floor plans not to scale. For identification purposes only.

# Seventh: 16,277 sq ft



WOOD STREET



GRESHAM STREET

GOLDSMITH STREET

GUTTER LANE

KEY

- Office
- Plant
- Core
- WCs

Floor plans not to scale. For identification purposes only.

[tengresham.com](http://tengresham.com)